

Kspace

# SUMMER SCHOOL 2026

## VOYAGE WITH DOLITTLE & FANTASY FRIENDS

Saturday July 18th to Saturday August 22nd

&  
Summer Special Extension, Wednesday August 26th to Saturday September 5th



BOOK NOW

[www.kspacetokyo.org](http://www.kspacetokyo.org)



# SUMMER SCHOOL 2026

## VOYAGE WITH DOLITTLE & FANTASY FRIENDS & SUMMER SPECIAL PERIOD



We invite your child to join for a summer like no other, where fantasy meets fact, and we get to share time with a great combination of colourful characters, both classic and modern.

Summer School at Kspace is THE best way for children to have a real 'break away' from their regular school schedule. We ensure memorable experiences for children in the holidays by offering top quality lessons, fun and 'edutainment'. Following the themed Summer School, we also have an exciting 'Summer Special' period that runs all the way through to the end of the summer break. Daily schedules include live music, dance, sports and games, science, drama and of course lots of art projects. We also have time for some good old mathematics and phonics!

Every summer guest is treated to group study experiences especially designed for their age and Kspace also offers a fantastic range of 1-1 tailored tuition options too.

**Themes: 14 months to 10 years**

**Mondays: Sports & Games**

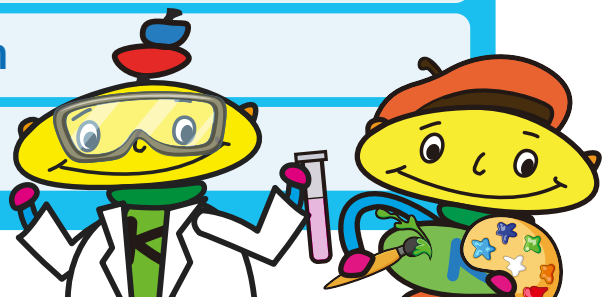
**Tuesdays: Music, Drama & Phonics**

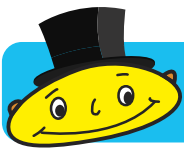
**Wednesdays: Geography, Cooking & Culture**

**Thursdays: Art & Design**

**Fridays: Science Exploration**

**Saturday: Variety**





# Programme and Service Options



## Regular Day

**14 months to 10 years:** Monday through Saturday. 9:00 am to 3:00 pm

## Extension Hours

Morning and Afternoon extension hours can be booked to extend your child's regular day.

- **Breakfast Club: 8:00am – 9:00am**

Bookings and payments are made in fixed 1-hour units.

If you would like your child to have breakfast before their classes begin, please kindly provide their meal for them.

- **Afternoon Extension Hour: 6:00–7:00pm**

Booked and paid as a full hour – no partial charges.

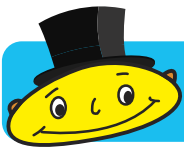
## After School Classes

**14 months to 10 years:** Monday through Saturday. 3:00pm to 6:00pm

## Private 1-1 Tuition (Music & Academic)

### 4 years +

1-to-1 tuition can be added to your child's attendance periods during the morning or afternoons from Monday to Saturday, or they can come for private tuition only. All new students start with a 1hr assessment. Sessions are booked in advance, in blocks. Please contact us for times and tutor availability.



# Meals



*Meals Note: All details regarding meal provision/providers, dates and details for ordering meals, things to bring, packed lunch guide and food policies are sent to families in our Summer Starter Pack, to ensure accuracy.*

## Monday to Friday Meals (excluding August 24th and 25th):

Catered meals (morning snack + lunch set/separate snack packs for afternoons) are ordered online from independent caterer, Kiwi Kitchen, and paid directly to Kiwi Kitchen@:

- Regular Meal: Morning Snack and Lunch ¥900
- Large Meal: Morning Snack and Lunch ¥1,000



*Meal Booking/Info: Parents abide by the rules of booking/cancellation etc. of the independent caterer.*

*Kiwi Kitchens provide a wide range of meals and also offer choices for some specific diets.*

*Orders must be placed by the Thursday before the week you are ordering for.*

## Saturday Snacks and Lunches:

Kspace caters on Saturdays.

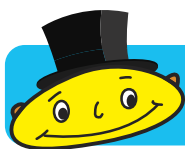
The snack and meal set is ordered online directly and paid in cash to Kspace. Meals can be ordered prior to attendance and are charged @:

¥1,000 for a morning snack & lunch set

¥1,300 for morning snack, lunch & afternoon snack set

*Details of limited Saturday meal choices will be sent in your Summer Starter Pack. Kindly note that Kspace cannot cater to specific diets and allergies.*

**Packed Snacks & Lunches** \* Packed snack and lunches from home are also allowed. We are a 'nut free' free school (as well as other restrictions) and all food sent in must be prepared to/adhere by our Prohibited Food Policy.



# Calendar



Each week our Regular Programme (9.00am to 3.00pm) has a key theme, and every day has a balance of activities plus an area of focus.

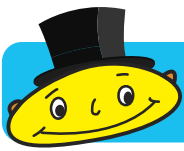
If you are not ready for the summer to end, then don't worry; Kspace has a great summer extension plan that runs after the main Summer School weeks. Staying in the spirit of summer fun, we add an extra two weeks of creativity and days jam packed with great activities!

## JULY

MONDAY	TUESDAY	WEDNESDAY	THURSDAY	FRIDAY	SATURDAY
					18 Saturday Spectacle
20 Sports & Games	21 Music, Drama & Phonics	22 Geography, Cooking & Culture	23 Art & Design	24 Science Exploration	25 Saturday Spectacle
Week 1: Saturday July 18th & Week 1: 20th to July 25th: Dolittle Talks to the Animals					
27 Sports & Games	28 Music, Drama & Phonics	29 Geography, Cooking & Culture	30 Art & Design	31 Science Exploration	
Week 2: July 27th to August 1st: Dr. Dolittle's Tales of Kings and Queens					

## AUGUST

MONDAY	TUESDAY	WEDNESDAY	THURSDAY	FRIDAY	SATURDAY
					1 Saturday Spectacle
Week 2: July 27th to August 1st: Dr. Dolittle's Tales of Kings and Queens					
3 Sports & Games	4 Music, Drama & Phonics	5 Geography, Cooking & Culture	6 Art & Design	7 Science Exploration	8 Saturday Spectacle
Week 3: August 3rd to 8th: Dolittle & The Magic Garden!					
10 Sports & Games	11 Music, Drama & Phonics	12 Geography, Cooking & Culture	13 Art & Design	14 Science Exploration	15 Saturday Spectacle
Week 4: August 10th to 15th – Dr. Dolittle's Amazing Creatures					
17 Sports & Games	18 Music, Drama & Phonics	19 Geography, Cooking & Culture	20 Art & Design	21 Science Exploration	22 Saturday Spectacle
Week 5: August 17th to 22nd – Dr. Dolittle's Crafty Adventures					
24 Closed	25 Closed	Summer Extension weeks Summer Special runs from August 26th to September 5th.			



# Weekly Themes - 14 months to 10 years



Students pack their imaginary travel chests for 5 wonderful weeks worth of daily discoveries set against our Dolittle themes. In our exciting quest to find a mysterious island, we'll be learning about kings and queens, great train and ship journeys, navigation, beautiful creatures (rare, extinct and magical species) and special potions!

We reference many great characters from our favourite Dolittle books and movies, visit imaginary and real places, and investigate some fantastical facts and fiction. Even children who haven't heard of Dr. Dolittle and his antics will love what we have waiting for them! As we travel, we will take on board some very colourful characters. To bring the exciting Dolittle tales into the modern day and add some relatability for our young children, we invite some well loved pop-culture friends to share this summer journey.

Our final Summer Special weeks (ages 14 months to 10 years) have slightly different content and daily schedules, with a fabulous balance of creative arts and academic features.

## Saturday July 18th & Week 1 - Monday July 20th to Saturday July 25th Dolittle Talks to the Animals

Let's get summer started! This week we enjoy an introduction to Dr. Dolittle and his menagerie of furry friends. One of Dolittle's amazing talents is his ability to talk with all animals - imagine that! We investigate the fascinating ways that animals communicate and learn about the world around them. We'll look at animal senses and discover amazing eyes, ears, noses, antennae and cute whiskers. From under the sea to above the earth, barks to biological sonar, the children will love stepping into the realm of animals and the slightly crazy Dr. Dolittle!



## Week 2 - Monday July 27th to Saturday August 1st Dr. Dolittle's Tales of Kings and Queens

When Dr. Dolittle's fame spreads throughout the kingdom even the Queen needs his help. Dolittle and his merry band of friends set sail across the seas, and on his journey meet kings and queens, discover castles and palaces, food fit for royalty and luxury travel. On our journey we'll take a look back in history at emperors and pharaohs, find out all about how to stay healthy, search for our very own magic potions and crowns jewels. Race with us as we embark on treasure hunts, and get dressed up with capes, props and regal trinkets, plus create our very own crests.



## Week 3 - Monday August 3rd to Saturday August 8th Dolittle & The Magic Garden!

This week Dolittle has a huge surprise in store! Whilst searching for a special flower in a beautiful garden he breathes in a wonderful scent and suddenly he becomes small...really, really small! We'll be learning about plants, moths/butterflies, other bugs and of course the fabulous bee. Children will have fun and games creating large obstacles to represent 'giant things' in the gym, and our art projects will be super-sized! Whilst seeing the world from our friends the Bugs' perspective we'll look at the importance of eco-awareness. We will also learn about swamps and quicksand, oasis, and other strange things on our planet that make it such a wonderful place!



## Week 4 - Monday August 10th to Saturday 15th

### Dr. Dolittle's Amazing Creatures

Animals are wonderful! They help us, they need us, and they constantly amaze us! This week we enjoy finding out about the way that animals and humans can work in harmony, learning about everything from postal pigeons to rescue dogs. We wow the children with a look at some of the magnificent beasts on Earth, endangered animals and conservation, and the valuable work of vets. We learn how trustworthy furry friends can help us to find a special potion and ingredient to help a sickly queen with their brilliant noses, and then how a whole team of strong dogs can help guide and pull us all the way back to England to finish our task. The week wouldn't be complete without allowing our imaginations to run free and we discover mythical creatures like unicorns, dragons, giant snails and other cool critters! We know the children love animals of all kinds, and we are hoping to share some time with some 'Zootopian style' friends, as we explore and design a city full of (and built for) animals.



## Week 5 - Monday August 17th to Saturday 22nd

### Dr. Dolittle's Crafty Adventures

To wind down our five week themed adventure, Dr Dolittle needs to try desperately to get home - with the help and ingenuity of our children we know he can do it! Fortunately, we have a lot of fun and crazy friends to jump in and lend a hand. Using great ideas and ingenuity, characters like Super Mario will be helping Dolittle and friends escape from a tiny island in South America! This week we design and enjoy some challenging obstacle courses, learn about direction/map reading/orienteering, and give our bodies and brains a true workout!



## 'Summer Special' Extension

### Weeks 6 & 7 - Wednesday August 26th to Saturday September 5th

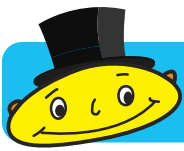
If you're not ready for the summer to end, then don't worry: Kspace has a special extension plan that allows children to enjoy and learn right up to the end of the first week in September. Our Summer Special provides 10 days of summer fun, balancing creative and academic activities.

Notes:

*Closed August 24th and 25th*

*Saturdays August 29th and September 5th run to the regular Saturday School content.*





# Daily Theme



Every day at Kspace has a special selection of fun!

## Mondays - Sports & Games

Children of all ages love to let off steam, particularly in summer! Sports & Games Mondays offer a funky range of sports, obstacle courses, team games, challenges, and physical fun that the kids won't be able to get enough of! Kspace has a beautifully equipped soft-gym, soft-floor rooftop with a custom-designed sun-awning and water-play equipment, plus a huge range of fantastic tools to build fantasy worlds for funky fitness!

**Dates: July 20th & 27th. August 3rd, 10th and 17th**

**Summer Special Monday: August 31st**

**CLOSED: MONDAY AUGUST 24TH**



## Tuesdays - Music, Drama & Phonics

Role-play is very popular with children and dramatic play has been proven to be a great way to learn! All five age groups have a special age-appropriate theme and content on 'Music & Drama Tuesdays' that ranges from world music, percussion time, teaching/interacting with puppets, make believe play, situation role-play, acting in pairs, small skits and even learning mini-dances! We make each class come to life with a lovely range of props, costumes, backdrops, toys and materials to create a memorable and rewarding experiences.

**Dates: July 21 & 28th. August 4th, 11th and 18th**

**Summer Special Tuesday: September 1st**

**CLOSED: TUESDAY AUGUST 25TH**



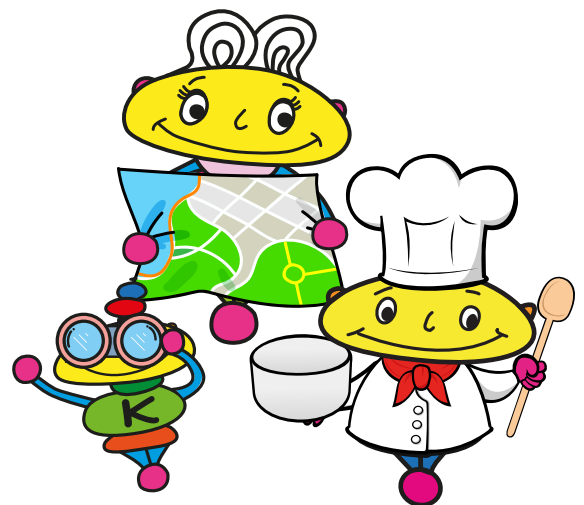
## Wednesdays - Geography, Cooking & Culture

Across the weeks we learn about some great geographical facts, cultures, and match our knowledge with tasting the culinary treasures of our discovered lands!

Children really love the combination of fun and diverse activities on Wednesdays, when we carefully time the daily schedule to offer some great hands-on culinary creation, classroom based exploration and rooftop outdoor adventure.

**Dates: July 22nd & 29th. August 5th, 12th and 19th**

**Summer Special Wednesdays: August 26th and September 2nd**



## Thursdays - Art & Design Parties

Kspace is famous for its variety of creative arts and in summer we have some spectacular projects for the kids! We cover everything from large-scale mural art to individual pieces. Children love having the freedom to use materials generously, and the extraordinary variety of mediums we use goes beyond what they are normally exposed to. Projects are sensory based and fabulous fun with discovery of something magical every week!

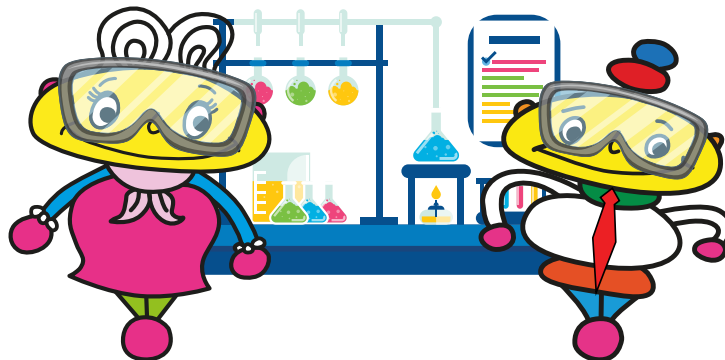
**Dates: July 23rd & 30th. August 6th, 13th and 20th**  
**Summer Special Thursdays: August 27th and September 3rd**



## Fridays - Science Exploration

Even the youngest children can enjoy explorative, hands-on, science based fun at Kspace! Fridays are for mini and midi-scientists, and our teachers take the children through some projects that will enhance their knowledge and make them even more curious about the world around them! Kids love to explore and inquire - they like things that bubble, fizz, whizz and pop! Science Exploration Fridays cover a wide range of subjects.

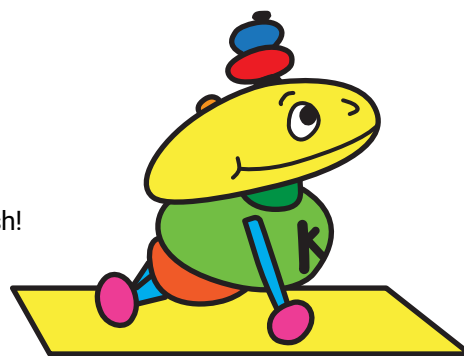
**Dates: July 24th & 31st. August 7th, 14th and 21st**  
**Summer Special Fridays: August 28th and September 4th**



## Saturdays - Saturday Spectacle

The fun doesn't stop on Saturdays! Kspace is open every Saturday during summer and Saturdays can be included in your Summer School plan. The Saturday daily schedule has the same times but a slightly different combination of activities, with our wonderful balance of fun from start to finish!

**Dates: July 18th, 25th & August 1st, 8th, 15th and 22nd**  
**Saturday regular themed dates: August 29th and September 5th**



## For EFL/English Language Learners

**ELL students are welcome in the Summer School period.**

All new students start with a paid trial before Summer School (or an incoming meeting via Zoom) so we can assess language skills. Our ESL specialists will check incoming language levels and recommend specific attendance patterns and courses. Please note: Our curriculum/activities in summer school are fun and in a 'holiday style'. Class delivery is aimed at a general group level - not at an individual level, or for specific needs or challenges. We strongly recommend adding ESL/EFL After School classes and Saturday School for extra study - particularly for English beginners age 3yrs+. For all students with particular goals, private tuition focusing on specific areas is the best supplement to the regular day.

Please also ask us about our Summer Extension, offering an extra opportunity to boost language skills. This runs when our regular Summer School finishes.





# Summer School Timetable



'Regular Day' attendance is advertised as '9.00am to 3.00pm' but younger groups have staggered drop-off/collection to avoid congestion near the school. Group selection is decided by Kspace. Entry for Cheeky Monkeys to Young Doolittles is based on a DOB cut off of August 31st 2025 for incoming students.

For the first 5 themed weeks children enjoy a cross-range of themed activities, as below. From August 26th the schedule is more in line with term-time, with a balance of music, arts and crafts, academic learning and age appropriate fun activities.

	Mini Moles (14 months to 3 years)	Cheeky Monkeys (3 to 4 years)	Lovely Llamas (4 to 6 years)	Awesome Ostriches (6 to 8 years)	Young Dolittles (8 to 10 years)
8:00 - 8:45/9:00	Optional Breakfast Club				
8:45	Regular Drop-Off				
8:50		Regular Drop-Off			
9:00			Regular Drop-Off	Regular Drop-Off	Regular Drop-Off
9:00 - 9:15					Registration & Morning Meeting
9:15 - 9:30					
9:30 - 9:45	Themed Circle Time	Themed Circle Time	Morning Meeting & Themed Circle Time	Morning Meeting & Themed Circle Time	Themed Activity 1
9:45 - 10:00					
10:00 - 10:15	Story Time plus Snack/Toilet Time	Story Time plus Snack/Toilet Time	Focus Period (Maths/Phonics) & Snack 1 plus Toilet Time	Focus Period (Maths/Phonics) & Snack 1 plus Toilet Time	
10:15 - 10:30					Snack/Toilet Break
10:30 - 10:45	Themed Activity 1				
10:45 - 11:00		Themed Activity 1	Themed Activity 1	Themed Activity 1	Themed Activity 2
11:00 - 11:15	Gym Play				
11:15 - 11:30	Themed Activity 2				
11:30 - 11:45		Gym Play			
11:45 - 12:00	Lunch		Physical Activity Period <small>(on Fitness Fridays this period may be swapped for another subject)</small>	Physical Activity Period <small>(on Fitness Fridays this period may be swapped for another subject)</small>	Themed Activity 3
12:00 - 12:15		Themed Activity 2			
12:15 - 12:30	Puppets/Story Time/ Nappies/Toilet		Lunch & Toilet Time	Lunch & Toilet Time	Lunch & Rest
12:30 - 12:45					
12:45 - 1:00	Cocoon Club <small>(nap or rest time – some children like to snooze, others like to enjoy quiet table activities, puzzles or play with a teacher)</small>	Lunch & Toilet Time			
1:00 - 1:15					Physical Education
1:15 - 1:30			Themed Activity 2	Themed Activity 2	
1:30 - 1:45	Gym Time/ Music Time	Themed Activity 3			Well Being/Yoga/Relaxation
1:45 - 2:00					
2:00 - 2:15	Activity 3	Music & Percussion Time (or alternative activity)	Final songs/ stories/games	Final songs/ stories/games	Themed Activity 4
2:15 - 2:30					
2:30 - 2:45	Wind Down & Pack Up	Wind Down & Pack Up	Daily Reiteration	Daily Reiteration	
2:45	Regular Collection				
2:50		Regular Collection	Wind Down & Pack Up	Wind Down & Pack Up	Wind Down & Pack Up
2:45 - 3:00	Snack/break period for after-school students		3.00pm Regular Collection		
3:00 - 4:00	After-School Classes				
4: 00 - 5:00	After-School Classes				
5:00 - 6:00	After-School Classes				
6:00 - 7:00	Extension Hour available @ ¥2,000. No part charges. All families arriving at any time after 6.00pm will incur this charge.				



# Fees



## Entrance Fees

All fees below are per child.

### Kspace Enrolled Members Only

No Registration Fee

Materials Fee ¥8,000 per child

### Non-Kspace Members

Summer School Registration Fee of ¥25,000 per child

Materials Fee ¥8,000 per child

### Membership Notes

For repeat attendance: You can benefit in future Summer & Winter School periods if you opt to join one of our membership options. Note: The Summer/Winter Materials Fee always applies.

In addition to the mandatory Summer School registration fee listed above, you can add:

1. Aspace Membership @ ¥20,000 - enter weekly mid-term After School classes/Private Lessons and Summer & Winter seasonal camps without further registration fees in the future.
2. Saturday Membership @ ¥40,000 (& ¥10,000 Annual/Materials Fee) - enter midterm Saturday school, Private Lessons and Summer & Winter seasonal camps (midweek and Saturdays) without further registration fees.

### Screening & Trial Fee

Option 1 :Trial at Kspace (up to July 11h only) - Saturdays 9:30am to 12:30pm or 2:00 to 5:00pm @¥12,500.

Option 2/Overseas: Zoom/Online Screening @¥15,000.

*Note: All new students have a mandatory incoming trial at Kspace or an online screening.*

## Daily Attendance Fee

	Time	Single Day
All age groups	9:00am to 3:00 pm	¥13,000
	All-day option 9:00am to 5:00pm	¥18,000 (includes 2hrs of after school classes)

#### Note:

Saturday Fees: Saturday enrolled members can use their usual Saturday tickets for Saturday dates during Summer School. Your fee (and attendance times) will remain the same as your prepaid blocks.

### After School

¥3,000 per class for 1 hour sessions or ¥25,000 per block of 10 x 1hr classes

### Private Tutorials (age 4yrs+)

Academic & Extra Curricular Subjects @ ¥10,000 per class (@1hr):

- Classes must be booked in advance and in minimum blocks.
- All new private students begin with a mandatory Academic/Language Initial Assessment @¥21,000 (1hr).

One-to-one lessons are offered in a variety of subjects e.g. Maths, Reading, Writing, Phonics, English Language, Science, Japanese, homework support and others.

Music @ ¥6,000 per 30 mins or ¥10,000 per 60 minutes

### Extension Hours

Breakfast Club 8:00am to 9:00am, ¥2,000

### Afternoon Extension

6:00pm to 7:00pm, ¥2,000

## Extra Costs

### Uniform

Regular T-shirt ¥3,500 Shorts ¥6,000

Allergy Safety-Aware T-shirt ¥4,000

Striped Dress ¥9,000

*Note: Uniform items are mandatory and must please be worn to each lesson.*

*Prices listed throughout the brochure are exclusive of Japanese Consumption Tax, to be added @10%*

### Meals

Kiwi Kitchen's catering service (Monday to Friday)

Regular size meal: morning snack + lunch set @¥900

Large size meal: morning snack + lunch set @¥1,000

*Note:*

- *If your child is staying on for After school classes, please provide an afternoon snack from home and label the container PM Snack.*
- *Kiwi Kitchen prices listed are inclusive of Japanese Consumption Tax*
- *Kiwi Kitchen's meals must be ordered in advance, by the Thursday before attendance. If the deadline is missed please send in meals from home prepared according to our policy.*
- *Kiwi Kitchen is an independent entity and these fees are correct at the time of brochure launch. In the case that the caterer reviews fees for the 2026 summer period, we will offer all families notice and revise prices accordingly in our Summer Starter/Orientation Pack.*
- *Kspace anticipates that there may be dates in the summer period when the Caterer is closed - for this short period Kspace takes over the catering and details will be revised and announced.*

### Saturday School Kspace Catering

Kspace Catering Morning snack & lunch @¥1,000

Afternoon Snack @¥300

### Japanese Consumption Tax

Prices listed in the fees document (with the exception of Kiwi Kitchen Fees) are exclusive of Japanese Consumption Tax @10%

## Fee & Attendance Notes

### Refunds, Make-ups and Credits

- Fees must be paid in full in order to secure a child's placement. No discounts, refunds of any type, or credits/carry-overs etc. are offered, without exception, including instances of fees paid far in advance of start date or cancellation.
- In the case that families have paid and yet are unable to enter the country, or are unable to remain in the country for any reason, the no refund/no cancelation/no credit etc. policy is upheld, without exception, regardless of family circumstances.
- In the case of any force majeure closure we will work with families to provide alternative dates or options but we cannot guarantee any provision of alternative service. In the event of a natural disaster (earthquake/typhoon i.e. situations of force majeure) Kspace will follow recommendations by the Tokyo Metropolitan Government, however we will decide to remain open, or to close, based on Management decision. In the case of natural disaster, unfortunately we are unable to offer refund/ compensation/make-ups etc. for attendance periods that are lost.
- **For all clients:** Summer School fees only apply to the Summer School 2026 period only. Fees/credit/days cannot be carried over if unused within the exact summer school period, in full or in part, including for regular Kspace members.
- For Kspace members, resident in Japan only: Make-up days may be offered (within the Summer School period) if 2 days notice of absence is given in writing (only). Approval of make-up days is based upon space availability and is at the discretion of the school.
- For non-Kspace members **and** members who are overseas/non-resident in Japan only: Make-up days, alternative dates or services are not offered, without exception. Failure to attend on booked dates will result in loss of the fees/service.

### Cancellation

- If you wish to cancel a Summer School booking for any reason you must do so in writing to Kspace International School. We do not accept notices via. phone, text or LINE etc.
- Once paid, Summer School fees are completely non-refundable (in whole or part), regardless of when the dates are booked and secured, and when the cancellation is received.
- Cancelling will result in your child losing their place in the Summer School and Kspace retaining all fees, and in the event that you wish to attend on other dates this will require rebooking, and payment in line with a new booking. Unfortunately we cannot offer refunds, services in lieu or credit etc. even when the notification has been sent.





## Communication



Summer School families have access to a fantastic password-controlled Members' website called 'Kokomo Club' that includes:

- ★ Videos
- ★ Theme updates
- ★ Newsletters

We invite parents to stay updated and like/follow/check-in and comment on our social media accounts.



@kspacetransnationalschool



@kspacetransnational



Our school mascots Kokomo and Kokomama are part of the Koko family, very important aliens, who love to join us occasionally for events calendar highlights. They even make an appearance in class sometimes! You will see these cheeky, caring, little characters in our brochures, and the children proudly wear Kokomo on their uniform T-shirts.

Please get to know our school mascots on their profile page [Click here!](#)



## Saturday School



The fun doesn't stop for Saturday attendees! During summer school we have select Saturday School dates and these Saturday courses run throughout the year. Families in Japan can opt for Saturday Membership, which allows your child to also attend any Saturday dates outside the summer camp, as well as Winter and Summer entrance in the future!

See details of regular Saturday groups here:  
<https://www.kspacetokyo.org/main/saturday/>

### Orientation Information

All details to prepare you well in advance for Summer School such as meal booking and packed lunch guidelines, uniform/T-shirt ordering details, things to bring, emergency contact information and website access passwords are sent a few weeks before the programme starts. The Summer Starter Pack is automatically forwarded to enrolled parents. Feel free to ask us any questions that you may have in the meantime.





# Summer School F.A.Q



## Q. When do we have to enroll?

Summer School is very popular with existing and returning Kspace families, so please try to book very early in the year. For new families, the screening/trial period must take place first and following this, we require full payment to hold a student's place. Unfortunately we cannot reserve or guarantee places unless they are paid in advance.

## Q. Is lunch provided or is it packed lunch?

Both options are available.

Packed Lunch: If your child has any specific needs re. their diet you should please provide a meal (plus snack/snacks), if you are unable to find the appropriate selection in the caterer's options.

We have a very strict Food/Drink Policy that will be sent to you.

*Note: New students with anaphylactic level allergies cannot unfortunately be accepted during the winter/summer school periods. If your child has any form of mild food/product sensitivity, please kindly disclose this at booking stage and we will contact you.*

## Q. My child is still toilet training. Can we join?

Yes, absolutely. Children who are at an appropriate age for ongoing toilet training are welcome to join. Please feel free to speak with us about our immersion programmes, which help younger children settle comfortably.

## Q. Are all these lessons in English?

Yes, instruction is only in English in the main summer programme. Our teachers are predominantly native English speakers from the U.K., Australia/New Zealand, Canada, America, some countries in Europe and other English speaking nations.

If families require tuition in Japanese, please enquire for details

## Q. Do children need to be able to speak English to be eligible?

No. We warmly welcome beginners, and no specific level of English is required to apply.

Summer School at Kspace is open to all children from 14 months to 10 years old. Our attendees include native and fluent English speakers from our international school and other schools, families visiting from overseas, ELL learners, and Japanese nationals with a wide range of English abilities.

Nursery-age groups do not have any language eligibility requirements. For preschool ages it is helpful if children have had some exposure to English, but it is not essential. For elementary ages ~ we will discuss the best options for your child after meeting/observing them, to ensure they can best benefit from their time with us.

To ensure we can support each child appropriately, overseas applicants will have a short Zoom meeting/screening, and applicants in Japan will attend a mandatory on-site paid trial before Summer School begins. These steps simply help us understand your child's needs.

Our course content is designed at a general level so that all children—beginners through to advanced—can enjoy and benefit from the programme. Absolute beginners are very welcome. During the application process, we will recommend the most suitable learning plan for your child.

Tailored English language support is available, and fees will be advised upon enquiry.

When we meet and observe your child, we will discuss their background and incoming level and share our recommendations. Families based in Tokyo often find that joining our regular extracurricular or ELL courses before Summer School provides an excellent start.



# Summer After School



## SUMMER AFTERSCHOOL

We offer a wonderful range of After School extracurricular classes throughout the summer. Families can purchase blocks of sessions to extend their child's day from 3:00 pm onwards. If your child is enrolled in our All Day programme, sessions until 5:00 pm are already included in your fee.

## PRIVATE TUTION

One-to-one tutoring is also available during Summer School with advance booking. We offer lessons in a variety of academic subjects, several languages, a range of musical instruments, and vocal coaching. Private tuition is available six days a week. Please enquire for tutor schedules and current availability.

## After School Timetable

**Saturday July 18th to Saturday August 22nd**

The schedule is below but may be subject to change

after school programmes  
**Aspace**

	Monday	Tuesday	Wednesday	Thursday	Friday	Saturday
<b>Mini Moles</b> (14 months to 3 years)	3:00pm Cooking 4:00pm Block Busters 5:00pm Art	3:00pm Sensory Play 4:00pm Letter Land 5:00pm Gym	3:00pm Toddler Football 3:00pm Baby Ballet 4:00pm Wheels & Tracks 5:00pm Cooking	3:00pm Early Science 4:00pm Number Rhymes 5:00pm Clay Modelling	3:00pm Pre-Phonics 4:00pm Art Studio 5:00pm Water Play	2:00pm Pre-Phonics 3:00pm Art
<b>Cheeky Monkeys</b> (3 to 4 years)	3:00pm Dance 3:00pm Phonics 4:00pm Art Masters 5:00pm Gym	3:00pm Intergalactic Art 4:00pm Gymnastics 4:00pm Silly Science 5:00pm Number Rhymes	3:00pm Phonics 4:00pm Sculpture 5:00pm Cooking	3:00pm Hip Hop 3:00pm Singapore Maths 4:00pm Collage and Clay 5:00pm Jewelry Making	3:00pm Ukulele 4:00pm Phonics 4:00pm Painting 5:00pm Gym	2:00pm Hip Hop 2:00pm Football 3:00pm Art 4:00pm English Language
<b>Lovely Llamas</b> (4 to 6 years)	3:00pm Dance 3:00pm Singapore Maths 4:00pm 3D Art Adventure 5:00pm Science	3:00pm Cooking Creations 3:00pm Gymnastics 4:00pm Word Wizards and Potion Makers 5:00pm Maths	3:00pm Art 3:00pm English Language 3:00pm Japanese 4:00pm Telling the Time 4:00pm Football 5:00pm Gym	3:00pm Team Games 4:00pm Hip Hop 4:00pm Counting Quest 5:00pm Jewelry Making	3:00pm Phonics 3:00pm Art Masters 4:00pm Ninja Club 4:00pm Japanese 5:00pm Team Games	2:00pm Phonics 2:00pm Hip Hop 3:00pm Singapore Maths 4:00pm English Language
<b>Awesome Ostriches</b> (6 to 8 years)  <b>Young Dolittles</b> (8 to 10 years)	3:00pm Cooking 4:00pm 3D Art Adventure 4:00pm Theatre Stars 5:00pm English Language	3:00pm Science Wizards 4:00pm World Records 4:00pm Japanese 4:00pm Science 5:00pm Jewelry Making	3:00pm City Designers 3:00pm Ukulele 4:00pm Art 5:00pm Sports Academy	3:00pm Painting 3:00pm Boxing 4:00pm Invention Lab 5:00pm Hip Hop	3:00pm Art Masters 3:00pm Ninja Club 3:00pm Glow in the Dark Science 4:00pm Sewing 5:00pm Movie Club	3:00pm ESL 4:00pm Phonics 5:00pm Creative Art



# Summer School 2026 Uniform



	All-Year Tshirt	Summer Only
Mini Moles	<p>Orange T-shirt</p> 	<p>Sweat Shorts (Orange)</p> 
Cheeky Monkeys	<p>Red T-shirt</p> 	<p>Sweat Shorts, Striped Shorts or Dress (Red)</p> 
Lovely Llamas	<p>Green T-shirt</p> 	<p>Sweat Shorts, Striped Shorts or Dress (Green)</p> 
Awesome Ostriches	<p>Purple T-shirt</p> 	<p>Sweat Shorts, Striped Shorts or Dress (Purple)</p> 
Young Dolittles	<p>Navy T-shirt</p> 	<p>Sweat Shorts, Striped Shorts or Dress (Grey/Navy)</p> 

## PRICES

Regular T-shirt ¥3,500  
Allergy Safety-Aware T-shirt ¥4,000  
Striped Shorts ¥6,000  
Striped Dress 9,000  
Sweat Shorts ¥4,000

**Note: Uniform items are mandatory and must please be worn to each lesson. Children must have an extra set of uniform in their child's bag, each attendance day. Prices listed are exclusive of Japanese Consumption Tax, to be added @10%**

## Online Order Form

### ★ Summer Uniform



### Examples (Not for sale at Kspace)



#### Uniform Indoor Shoes

- Only plimsolls/上履き are permitted inside the school.  
**PLEASE DO NOT PROVIDE ANY OTHER STYLE OF INDOOR FOOTWEAR.**
- White or Black



#### Outdoor Footwear

Children must wear slip-on sports-style outdoor shoes. Sandals, flip-flops, open-toe or open-back shoes, Crocs etc. **are all banned.** Children must wear plain light socks at all times.